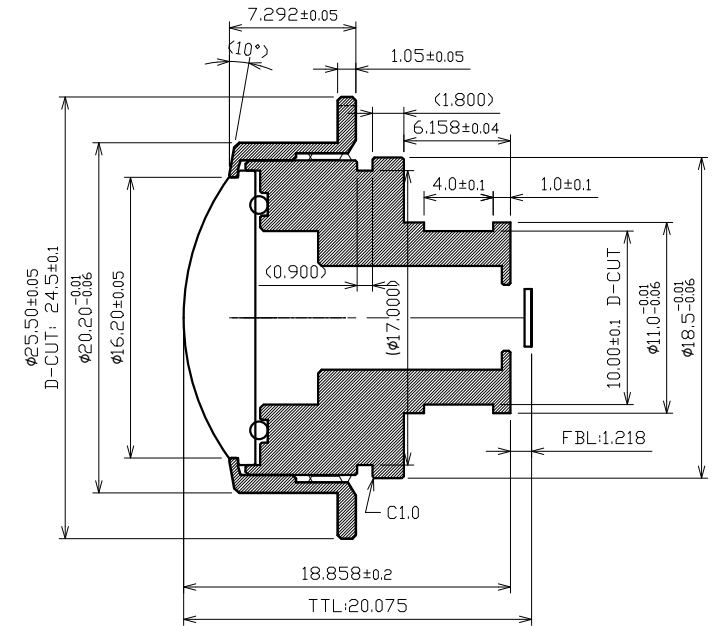
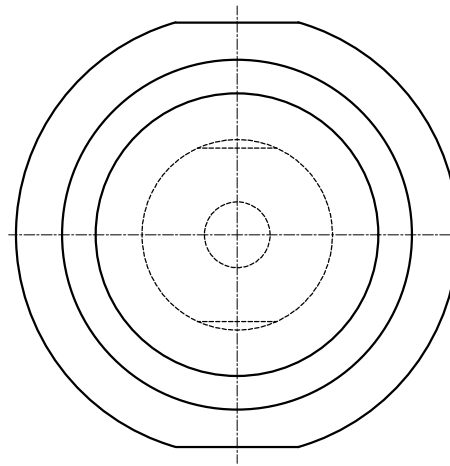
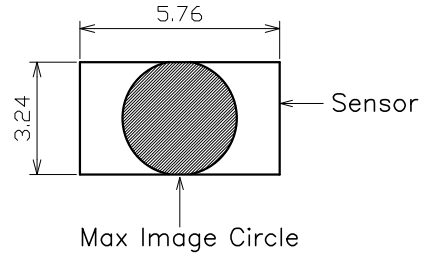


CONFIDENTIAL

REVISIONS					
ZONE	DATE	DESCRIPTION	DRAWN	CHECKED	APPROVED
▲					

SPECIFICATION: Rear view camera lens ( AG21033 )

1.	Sensor	1/2.7" AR0239 FHD 3um (Crop)	
2.	Image Height (mm)	6.61(D) x 5.76(H) x 3.24(V)	
3.	EFL	1.02mm±3%	
4.	F. No.	1.8	
5.	FOV	Diagonal	210°±5% at IH 3.3mm
		Horizontal	210°±5% at IH 3.3mm
		Vertical	210°±5% at IH 3.3mm
6.	BFL ( Incl. 0.4t IRCF )	1.88 mm	
7.	Relative Illumination	80% at 0.85F	
8.	TV Distortion	NA	
9.	TTL	20.08±0.2 mm	
10.	Chief Ray Angle	13.3°±1°	
11.	Structure	4G1GM, DBPF	
12.	Thread	None Thread type	



**AG OPTICS**