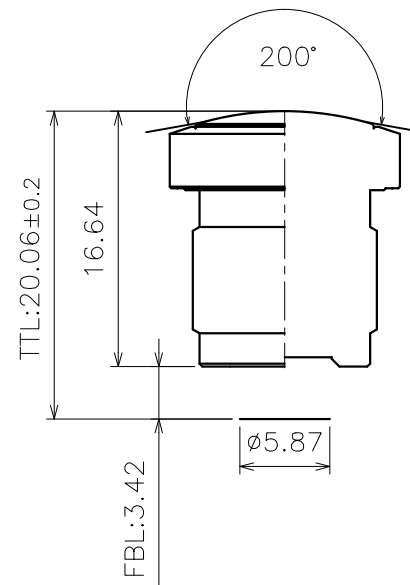
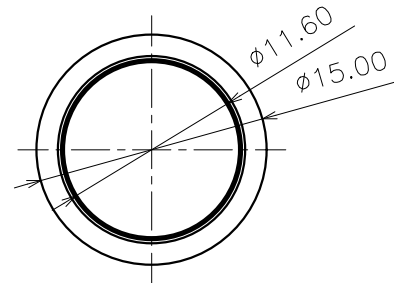


CONFIDENTIAL

REVISIONS					
ZONE	DATE	DESCRIPTION	DRAWN	CHECKED	APPROVED
△					

SPECIFICATION: CAMERA LENS (AG17059F)

1.	Sensor Format	IMX335 1/2.8" (16:9) (2560 x 1440) 2um	
2.	Image Height (mm)	5.87(D) x 5.12(H) x 2.88(V)	
3.	EFL	2.35mm±5%	
4.	F. No.	2.0±5%	
5.	FOV	Diagonal	172°±5% at IH 5.87mm
		Horizontal	140°±5% at IH 5.12mm
		Vertical	73°±5% at IH 2.88mm
6.	BFL (Incl. 0.4t CG & 0.4t IRCF)	4.40 mm	
7.	Relative Illumination	67% at Full Field	
8.	TV Distortion	-40.8%	
9.	TTL	20.06±0.2 mm	
10.	Chief Ray Angle	12°±1°	
11.	Structure	5G1GM IRCF	
12.	Thread	M12 x P0.5	



AG OPTICS