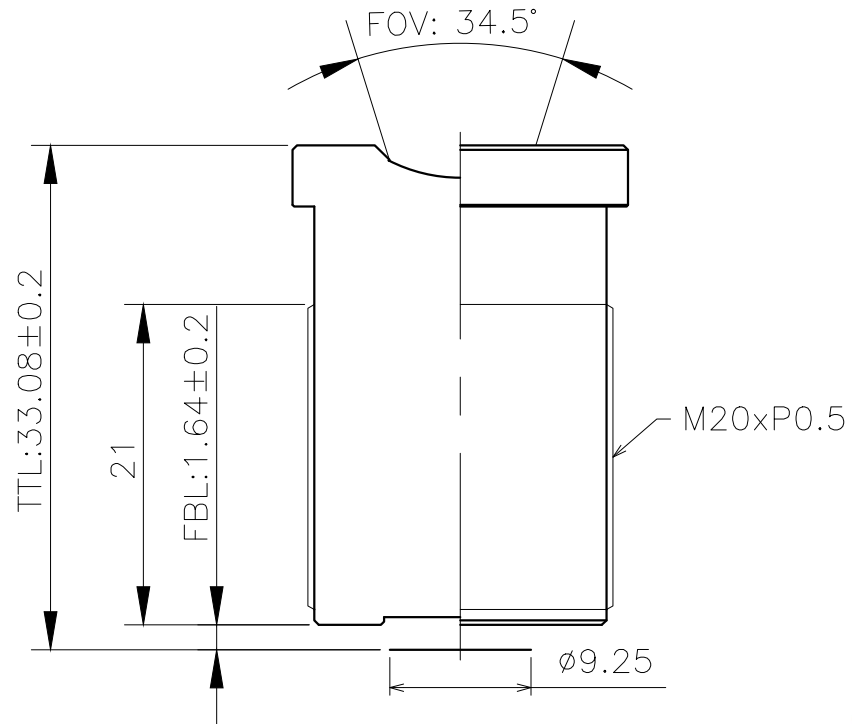
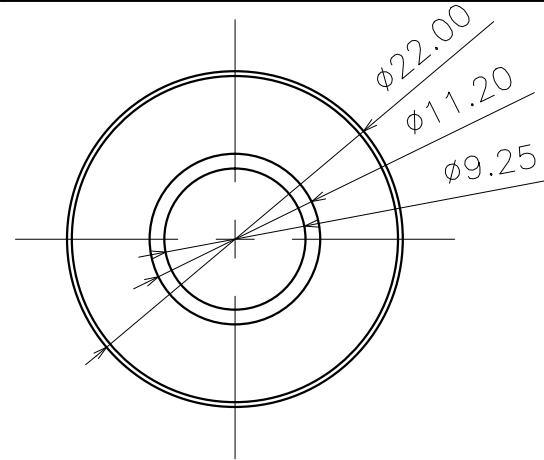


CONFIDENTIAL

| REVISIONS | | | | | |
|-----------|------|-------------|-------|---------|----------|
| ZONE | DATE | DESCRIPTION | DRAWN | CHECKED | APPROVED |
| △ | | | | | |

SPECIFICATION: CAMERA LENS (AG03593)

| | | | |
|-----|-----------------------------------|--|-----------------------|
| 1. | Sensor Format | 1/2" AR0820 8.3MP (3840x2160 2.1um) | |
| 2. | Image Height (mm) | 9.25(D) x 8.06(H) x 4.54(V) | |
| 3. | EFL | 15.4mm±5% | |
| 4. | F. No. | 1.65±5% | |
| 5. | FOV | Diagonal | 34.5°±5% at IH 9.25mm |
| | | Horizontal | 30°±5% at IH 8.06mm |
| | | Vertical | 17°±5% at IH 4.54mm |
| 6. | BFL(Incl. 0.4t Filter & 0.5t CG) | 4.24 mm | |
| 7. | Relative Illumination | 90% at 1.0F | |
| 8. | TV Distortion | -2.7% (HFOV 30') | |
| 9. | TTL | 33.08±0.2 mm | |
| 10. | Chief Ray Angle | 15°±2' | |
| 11. | Structure | 1GM5G Filter | |
| 12. | Thread | M20 x P0.5 | |



AG OPTICS